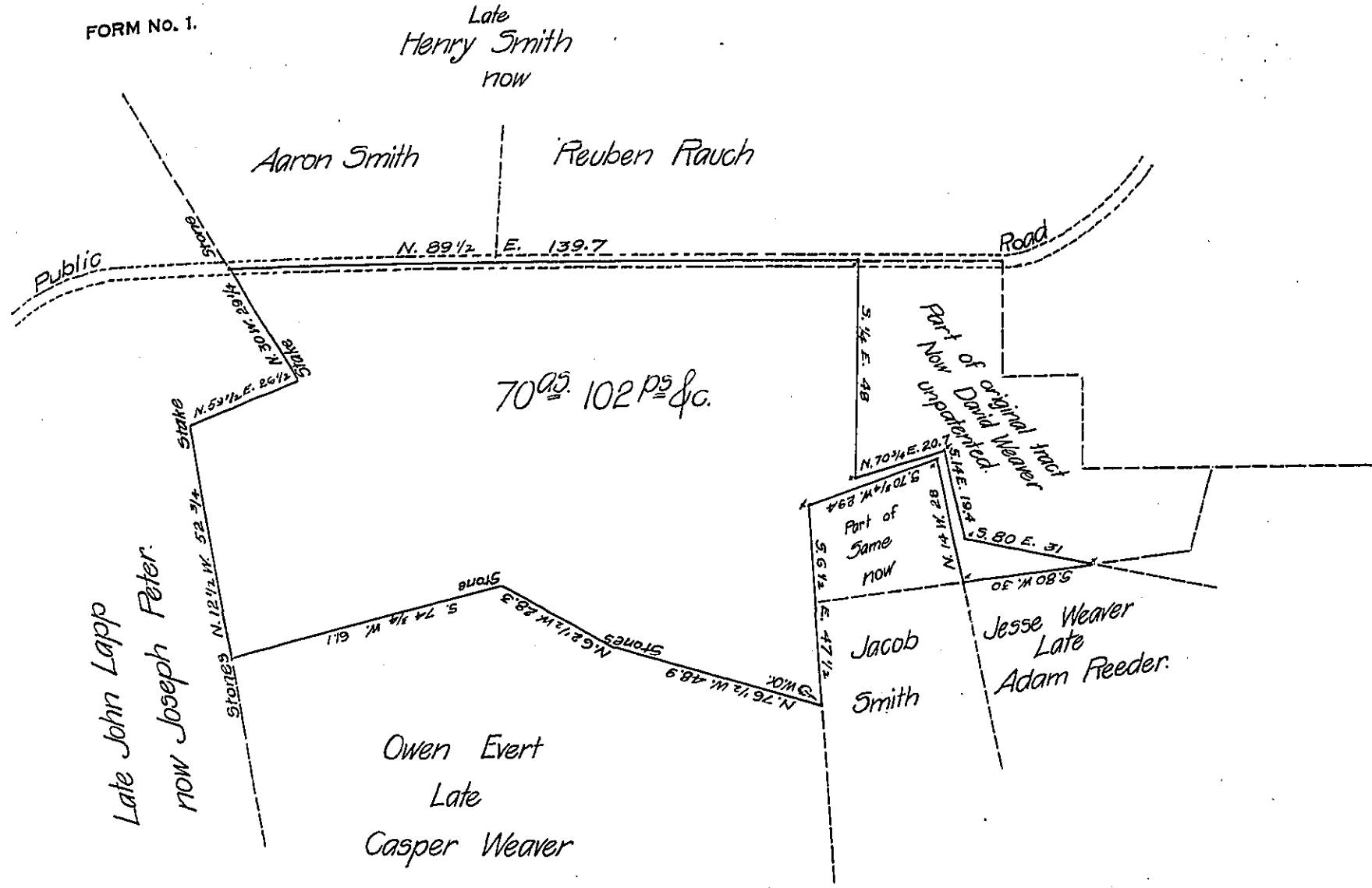


FORM NO. 1.



Draft of a tract of land situate in Heidelberg township, Lehigh County, containing 70<sup>ac</sup> 102 P<sup>s</sup> and allowance, surveyed for Jesse Weaver, the Sixth day of May A. D. 1872; being a part of a larger tract of 90<sup>ac</sup> 75 P<sup>s</sup> & c. Originally surveyed in pursuance and by Virtue of Application No. 1743, dated the 6<sup>th</sup> day of Aug<sup>r</sup> A. D. 1766, Entered in name of Casper Weaver.

Geo. Blank C.S.

R. B. Beath Esq. }  
 Surveyor General. }

IN TESTIMONY that the above is a copy of the original remaining on file in the Department of Internal Affairs of Pennsylvania, made conformably to an Act of Assembly approved the 16th day of February 1833, I have hereunto set my hand and caused the Seal of said Department to be affixed at Harrisburg, this 15<sup>th</sup> day of September, 1907.

*Henry Howells*  
 Secretary of Internal Affairs.